



The following information has been compiled by the Workforce Alliance of South Central Kansas. Local Area IV includes Butler, Cowley, Harper, Kingman, Sedgwick and Sumner Counties.

**Layoffs in Local Area IV**  
10/1/08 to 10/20/09

Industry	Number of Employers	Number of Layoffs
Aviation Manufacturing	21	11,876
Non-Aviation Manufacturing	26	1,779
Services	29	1,013
<b>Total Confirmed*</b>	<b>76</b>	<b>14,668</b>
<b>Unconfirmed**</b>	<b>20</b>	<b>2,605</b>
<b>Grand Total Confirmed and Unconfirmed</b>	<b>96</b>	<b>17,273</b>

\*Represents number of layoffs reported and confirmed to the Workforce Alliance. The number affected may often vary from the initial figure the employer reports to the media.

\*\*Represents companies that have reduced or have announced plans to reduce their workforce, but have not confirmed specifics to the Workforce Alliance.

Rapid Response Meetings are coordinated by the Workforce Alliance to provide immediate aid to companies and their affected workers during layoffs and plant closings. Rapid Response teams work with employers/employee representatives to quickly maximize public and private resources to minimize the disruptions on companies, affected workers, and communities associated with job loss. Rapid Response can provide customized services on-site at an affected company and accommodate any work schedule to assist through the painful transitions associated with job loss.

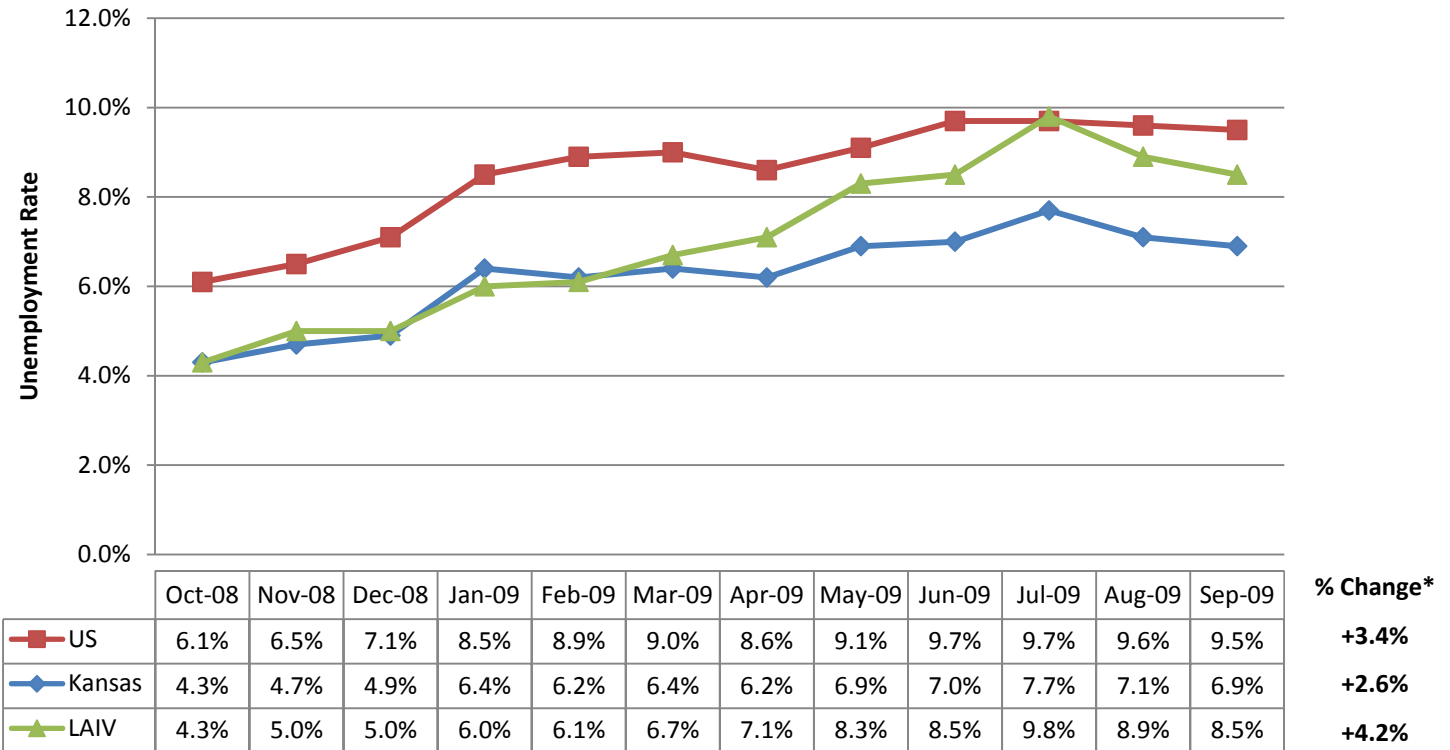
- In September the State unemployment rate was 6.9 percent and the National rate was 9.5 percent. Local Area IV's unemployment rate continues to be higher than the State, but is now 1 percent lower than the National rate with 8.5 percent for the area. Local Area IV's unemployment rate has increased by 4.2 percent since October 2008.

- Total employment in Aviation Manufacturing was 41,600 in November 2008. Confirmed layoffs to date are 29 percent of total aviation manufacturing employment or 11,876 individuals.
- There were 17,501 initial claims for unemployment benefits in September 2009, down from 20,677 initial claims for unemployment benefits last month and up from 12,703 in September 2008.

The chart below tracks unemployment rates for the United States, Kansas, and Local Area IV. Unemployment rates may vary slightly from previously reported numbers. The Bureau of Labor Statistics reports preliminary data and often makes corrections or revisions to previous data.

### Unemployment Rate

Source: Kansas Department of Labor & United States Department of Labor (Not Seasonally Adjusted)



Individual county unemployment rates for Local Area IV are as follows:

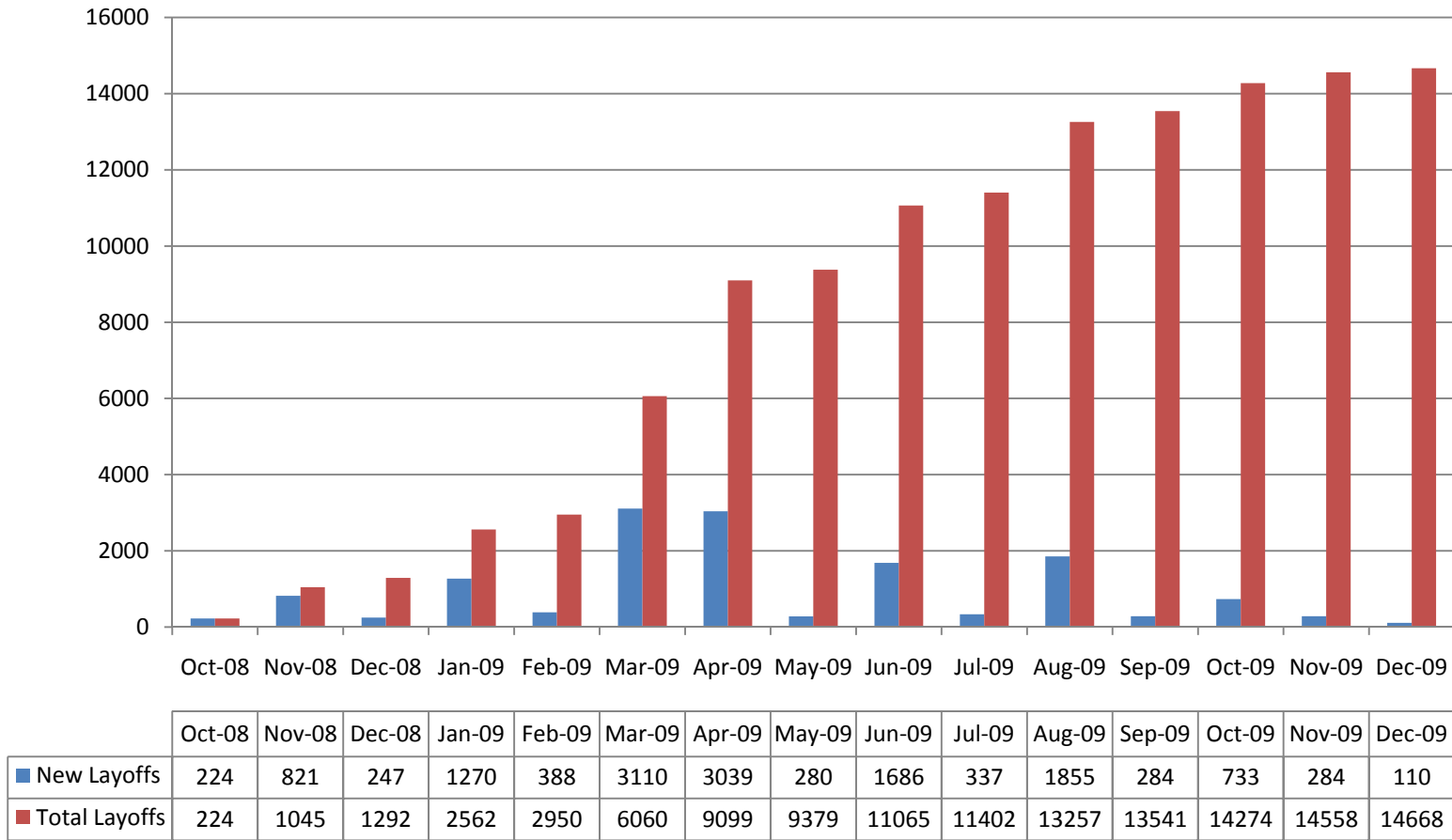
	Oct-08	Nov-08	Dec-08	Jan-09	Feb-09	Mar-09	Apr-09	May-09	Jun-09	Jul-09	Aug-09	Sep-09	% Change
Butler	4.0%	4.5%	4.8%	6.0%	5.7%	6.0%	6.2%	7.2%	7.5%	8.3%	7.7%	7.2%	<b>3.2%</b>
Cowley	4.2%	4.8%	5.4%	6.0%	5.9%	6.6%	6.1%	7.0%	7.4%	8.2%	7.5%	7.6%	<b>3.4%</b>
Harper	3.1%	3.4%	3.5%	4.5%	4.2%	4.5%	4.3%	5.6%	5.0%	6.6%	5.9%	5.6%	<b>2.5%</b>
Kingman	3.3%	3.4%	3.7%	4.7%	4.7%	5.4%	5.3%	6.6%	6.2%	7.2%	6.7%	6.3%	<b>3.0%</b>
Sedgwick	4.4%	4.6%	5.0%	6.0%	6.2%	6.9%	7.3%	8.6%	8.8%	10.2%	9.2%	8.8%	<b>4.4%</b>
Sumner	4.4%	4.4%	4.8%	6.3%	6.1%	6.7%	7.0%	8.3%	8.4%	10.3%	9.3%	9.0%	<b>4.6%</b>
Harvey	3.6%	3.7%	3.9%	4.9%	5.0%	5.4%	5.4%	6.4%	6.6%	8.7%	7.9%	7.4%	<b>3.8%</b>
Marion	3.4%	4.0%	4.0%	4.8%	4.9%	5.2%	4.7%	5.6%	5.8%	6.5%	6.3%	6.3%	<b>2.9%</b>
McPherson	3.3%	3.5%	3.6%	4.4%	4.3%	4.4%	4.5%	5.2%	5.2%	5.9%	5.4%	5.1%	<b>1.8%</b>
Reno	4.0%	4.3%	4.3%	5.5%	5.6%	5.9%	5.6%	6.4%	6.4%	7.1%	6.6%	6.3%	<b>2.3%</b>

**\*This column reflects the increase or decrease in the current unemployment rate compared to the rate for October 2008.**

**\*\* Counties are REAP/WIRED Counties outside of Local Area IV**

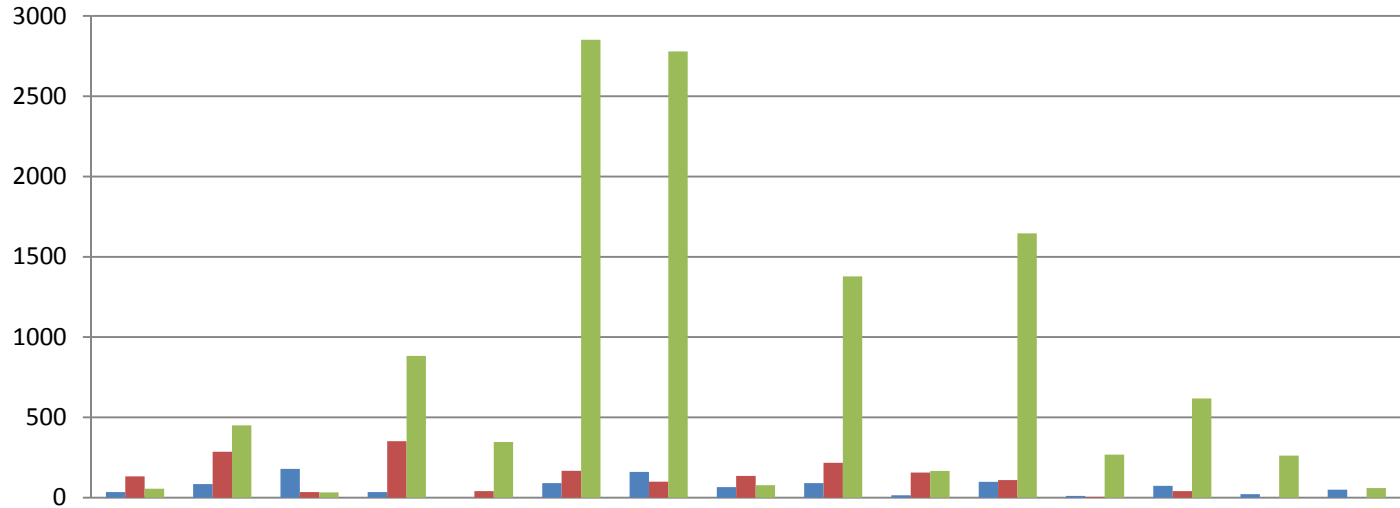
The chart below tracks the timing of the layoffs – the actual date the layoffs have taken place or when a termination date has been set, not the date the layoff was announced.

**Monthly Layoffs in Local Area IV**  
 As reported to the Workforce Alliance  
 October 1, 2008 to October 20, 2009



The chart below tracks the timing of the layoffs by industry – the actual date the layoffs have taken place or when a termination date has been set, not the date the layoff was announced.

**Monthly Layoffs by Industry**  
 As reported to the Workforce Alliance  
 October 1, 2008 to October 20, 2009



	Oct-08	Nov-08	Dec-08	Jan-09	Feb-09	Mar-09	Apr-09	May-09	Jun-09	Jul-09	Aug-09	Sep-09	Oct-09	Nov-09	Dec-09
■ Service Industry	35	85	179	35	0	91	160	66	91	15	99	11	74	22	50
■ Non-Aviation Manufacturing	133	286	35	352	41	167	100	136	217	156	110	5	41	0	0
■ Aviation Manufacturing	56	450	33	883	347	2852	2779	78	1378	166	1646	268	618	262	60